



सत्यमेव जयते

Government of Gujarat



Registration of License under The Factories Act, 1948

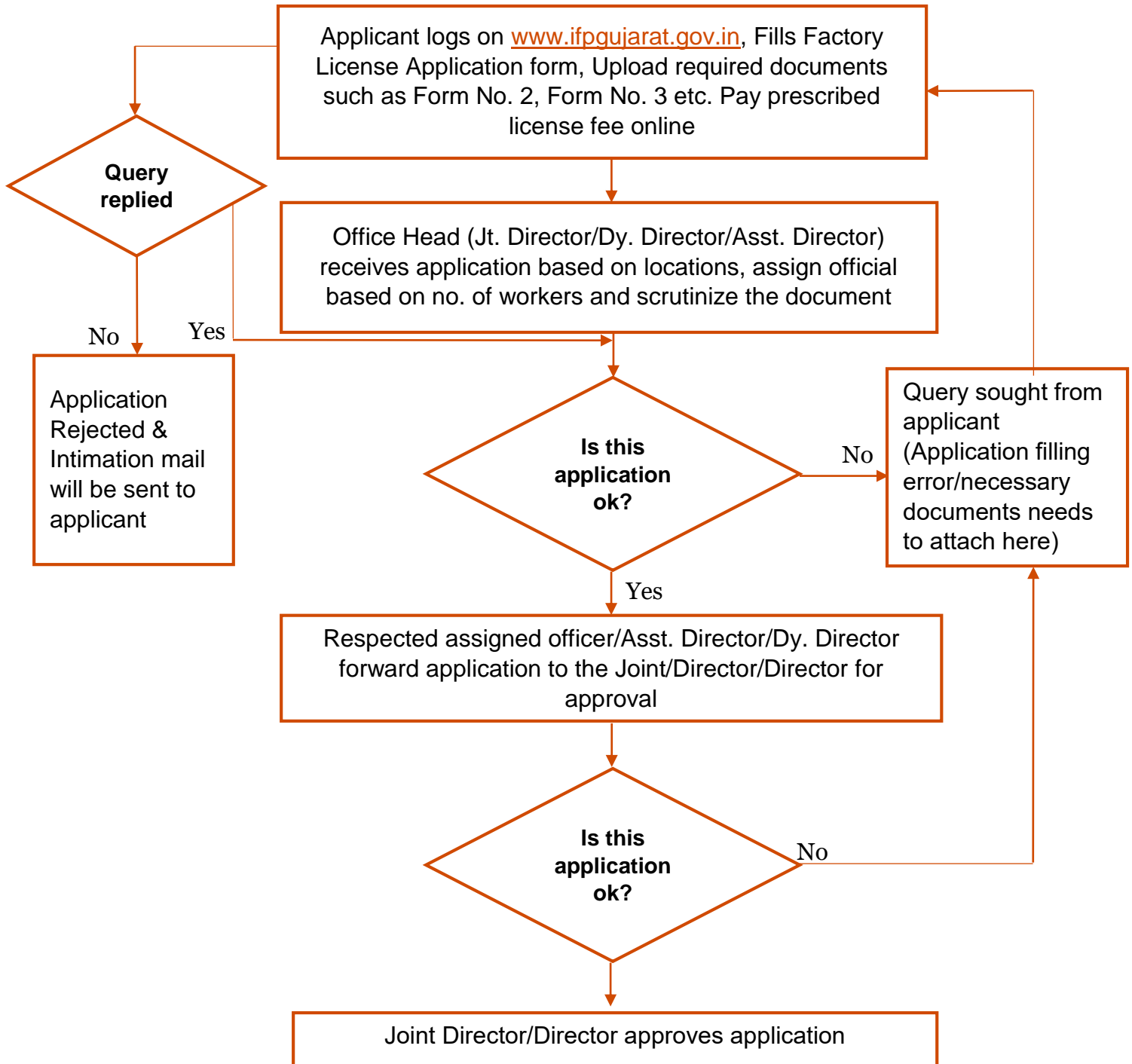
Process Flow, Fee Details and Timelines

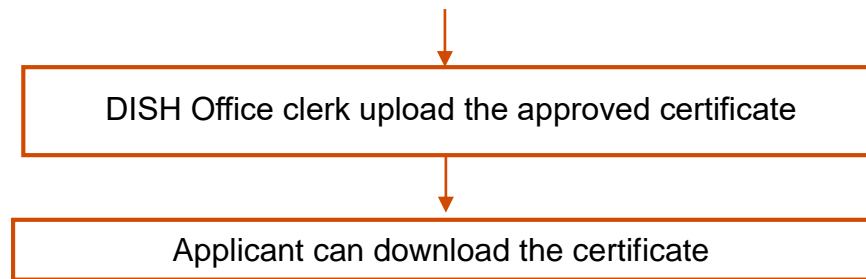
Government of Gujarat

Application Name:

Registration and Grant of License under the Factories Act, 1948

Process Flow:





Checklist:

- Form no. 2
- Form no. 3
- Stability certificate issued by competent person in form No. 1 A
- Proof for installed H.P. (Installed Bill)
- Proof for strength of workers (Attendance Register Form no. 28)
- Proof of Manager (Appointment Letter, Residential Proof and Photo ID)
- Proof of Occupier with Residence Proof and Photo ID
 - a) Partnership Deed
 - b) Memorandum of Article of Association, Form no.32 of ROC
 - c) Appointment Letter, from concerned administrative department, of Occupier for Government owned factories
 - d) Other documents
- GPCB Consent/NOC
- List of raw material, finished goods
- Flow process chart
- Process Description
- Such other particulars such as DISH (CIF)

Fee Details:

Horse Power	Maximum number of workers appointed on a single day during the span of a year								
	Till 20	From 21 to 50	From 51 to 100	From 101 to 250	From 251 to 500	From 501 to 1000	From 1001 to 2000	From 2001 to 5000	More than 5000
0 Horse Power	260 65	500 125	800 200	1600 400	3300 825	5300 1325	10600 2650	1500 3950	21100 5275
Till 10 Horse Power	500 125	800 200	1100 275	2100 525	4000 1000	7900 1975	15800 3950	21100 5275	26400 6600
From 10 to 50	800 200	1100 275	1600 400	3300 825	5300 1325	10600 2650	21100 5275	26400 6600	31700 7925
From 51 to 100	1300 325	1600 400	2600 650	4600 1150	7900 1975	15800 3950	26400 6600	31700 7925	37000 9250
From 101 to 250	2100 525	2600 650	4200 1050	5300 1325	10600 2650	21100 5275	31700 7925	37000 9250	42800 10700
From 251 to 500	2600 650	4000 1000	5300 1325	10600 2650	15800 3950	26400 6600	37000 9250	42800 10700	47500 11875
From 501 to 1000	3300 825	4600 1150	10600 2650	15800 3950	21100 5275	31700 7925	42800 10700	47500 11875	52800 13200
From 1001 to 2000	5300 1325	20600 2650	15800 3950	21100 5275	26400 6600	37000 9250	47500 11875	52800 13200	59400 14850
From 2001 to 5000	10600 2650	15800 3950	21100 5275	26400 6600	37000 9250	47500 11875	52800 13200	59400 14850	68600 17150
5001 or more	21100 5275	23800 5950	26400 6600	33000 8250	39600 9900	52800 13200	60700 15175	66000 16500	77900 19475

Timeline:

90 Days from the date of application

Thank You
